

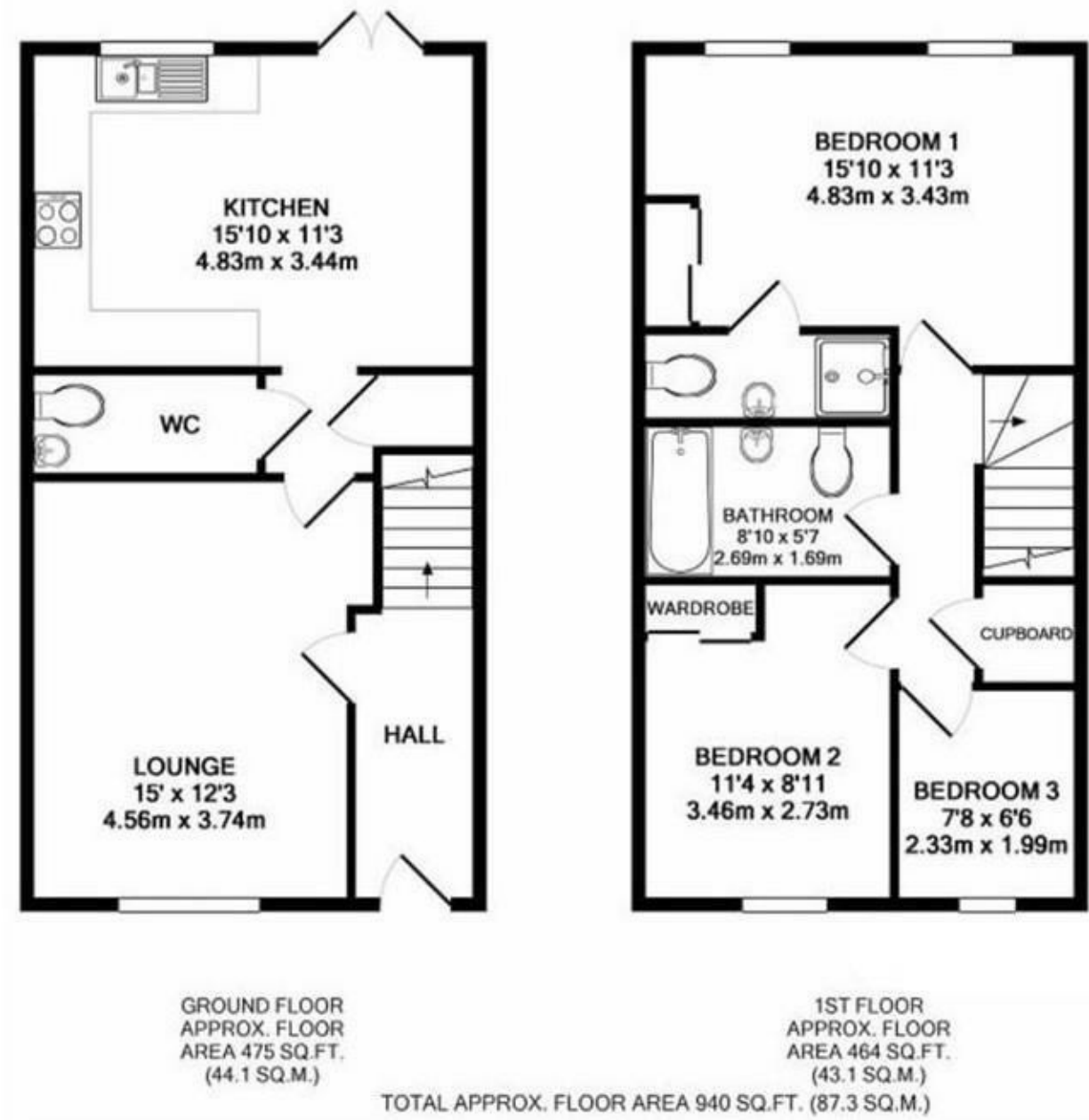
## Autumn Way, West Drayton, UB7 9GE

- Drayton Garden Village
- Unfurnished
- Parking
- En suite
- Three bedroom end of terrace
- Available August
- EPC Rating- B
- Downstairs WC

**£2,250 PCM**

**Description**

An impeccable modern three bedroom end of terrace family home positioned in the ever popular Drayton Garden Village. Benefits include two bathroom, (one en-suite to the main bedroom) downstairs wc, large kitchen diner and private front and rear gardens. The development is a short walk to the Town Centre with its wide selection of popular independent shops as well as excellent transport links to Heathrow International Airport and the M4, M25 motorways and the Elizabeth Line, West Drayton providing frequent services to London Paddington and beyond. Presented unfurnished and available for iAugust.



**IMPORTANT NOTICE**

These particulars have been prepared upon information supplied by the Vendor and should be verified by your surveyors and solicitors. We have prepared these sales particulars as a general guide to give a broad description of the property. They are not intended to constitute part of an offer or contract. We have not carried out a structural survey and the services, appliances and specific fittings have not been tested. All photographs, measurements, floor plans and distances referred to are given as a guide only and should not be relied upon for the purchase of carpets or any other fixtures or fittings. Lease details service charge and ground rent (where applicable) are given as a guide only and should be checked and confirmed by your solicitor prior to exchange of contracts